



**India Meteorological Department
(Ministry of Earth Sciences)**

NATIONAL BULLETIN NO. 16 (BOB/10/2022)

TIME OF ISSUE: 1130 HOURS IST

DATED: 25.12.2022

FROM: INDIA METEOROLOGICAL DEPARTMENT (FAX NO. 24643965/24699216/24623220)

TO: CONTROL ROOM, NDM, MINISTRY OF HOME AFFAIRS (FAX.NO. 23093750)

CONTROL ROOM NDMA (FAX.NO. 26701729)

CABINET SECRETARIAT (FAX.NO.23012284, 23018638)

PS TO HON'BLE MINISTER FOR S & T AND EARTH SCIENCES (FAX NO.23316745)

SECRETARY, MOES (FAX NO. 24629777)

H.Q. (INTEGRATED DEFENCE STAFF AND CDS) (FAX NO. 23005137/23005147)

DIRECTOR GENERAL, DOORDARSHAN (23385843)

DIRECTOR GENERAL, AIR (23421105, 23421219)

PIB MOES (FAX NO. 23389042)

UNI (FAX NO. 23355841)

D.G. NATIONAL DISASTER RESPONSE FORCE (NDRF) (FAX NO. 26105912, 2436 3260)

DIRECTOR, PUNCTUALITY, INDIAN RAILWAYS (FAX NO. 23388503)

CHIEF SECRETARY, TAMIL NADU (FAX NO 044-25672304)

CHIEF SECRETARY, ANDHRA PRADESH (FAX NO. 0863-2441029, 08645-246600)

CHIEF SECRETARY, PUDUCHERRY (FAX NO 0413-2334145)

ADMINISTRATOR, ANDAMAN & NICOBAR ISLANDS (FAX NO. 03192- 232656)

CHIEF SECRETARY, KARNATAKA (FAX NO. 080-22258913)

CHIEF SECRETARY, KERALA (FAX NO. 0471-2327176)

ADMINISTRATOR, LAKSHADWEEP ISLANDS (FAX NO. 0413-262184)

Sub: Depression over Southwest Bay of Bengal and adjoining Sri Lanka coast

The Depression over Southwest Bay of Bengal off Sri Lanka coast moved southwestwards with a speed of 09 kmph during past 06 hours and lay centered at 0830 hours IST of 25th December over Southwest Bay of Bengal and adjoining Sri Lanka coast near latitude 8.8°N and longitude 82.0°E about 80 km east-northeast of Trincomalee (Sri Lanka), 140 km southeast of Jaffna (Sri Lanka), 320 km southeast of Nagappattinam (Tamil Nadu) and 510 km south-southeast of Chennai (Tamil Nadu).

It is likely to continue to move southwestwards and cross Sri Lanka coast to the south of Trincomalee around noon of today, the 25th December. Thereafter, it would move west-southwestwards and emerge into Comorin Area & neighbourhood by tomorrow, the 26th December morning.

Warnings:

(i) Rainfall warning (Graphics enclosed)

- Light to moderate rainfall at many places with heavy rainfall at isolated places is likely over south coastal Tamil Nadu on 25th & 26th December 2022.
- Light to moderate rainfall at a few places with heavy rainfall at isolated places is likely over south Kerala on 26th December 2022.
- Light to moderate rainfall at many places with heavy rainfall at isolated places is likely over Lakshadweep Islands on 27th December 2022.

(ii) Wind warning (Graphics enclosed):

Southwest Bay of Bengal along & off Tamil Nadu and Sri Lanka coasts:

Squally wind speed reaching 45-55 kmph gusting to 65 kmph is likely to prevail till 26th morning and decrease thereafter.

Gulf of Mannar and Comorin Area along & off south Tamil Nadu & west Sri Lanka coasts:

Squally weather with wind speed reaching 45-55 kmph gusting to 65 kmph on 25th and 26th December.

Lakshadweep Islands & adjoining Southeast Arabian Sea:

Squally weather with wind speed reaching 40-50 kmph gusting to 60 kmph is likely to prevail on 27th December.

Southeast Arabian Sea & adjoining Lakshadweep Islands:

Squally weather with wind speed reaching 40-50 kmph gusting to 60 kmph is likely to prevail on 28th December.

Sea condition:

Southwest Bay of Bengal along & off Tamil Nadu and Sri Lanka coasts:

Sea condition is likely to be rough to very rough till 26th December morning and improve thereafter.

Gulf of Mannar and Comorin Area along & off south Tamil Nadu & west Sri Lanka coasts:

Sea condition is likely to be rough to very rough on 25th and 26th December.

Lakshadweep Islands & adjoining Southeast Arabian Sea:

Sea condition is likely to be rough to very rough on 27th December.

Southeast Arabian Sea & adjoining Lakshadweep Islands:

Sea condition is likely to be rough on 28th December.

Fishermen Warning (Graphics Enclosed):

Fishermen are advised not to venture into

- Southwest Bay of Bengal and along & off Sri Lanka coast till 25th December.
- Gulf of Mannar, Comorin Area and along & off south Tamil Nadu and west Sri Lanka coasts during 25th-26th December.
- Sea areas of Lakshadweep Islands & adjoining Southeast Arabian Sea on 27th December.
- Sea areas of Southeast Arabian Sea & adjoining Lakshadweep Islands on 28th December.

The System is being monitored continuously and next bulletin will be issued at 1430 hours IST of 25th December, 2022.

(M. Sharma)

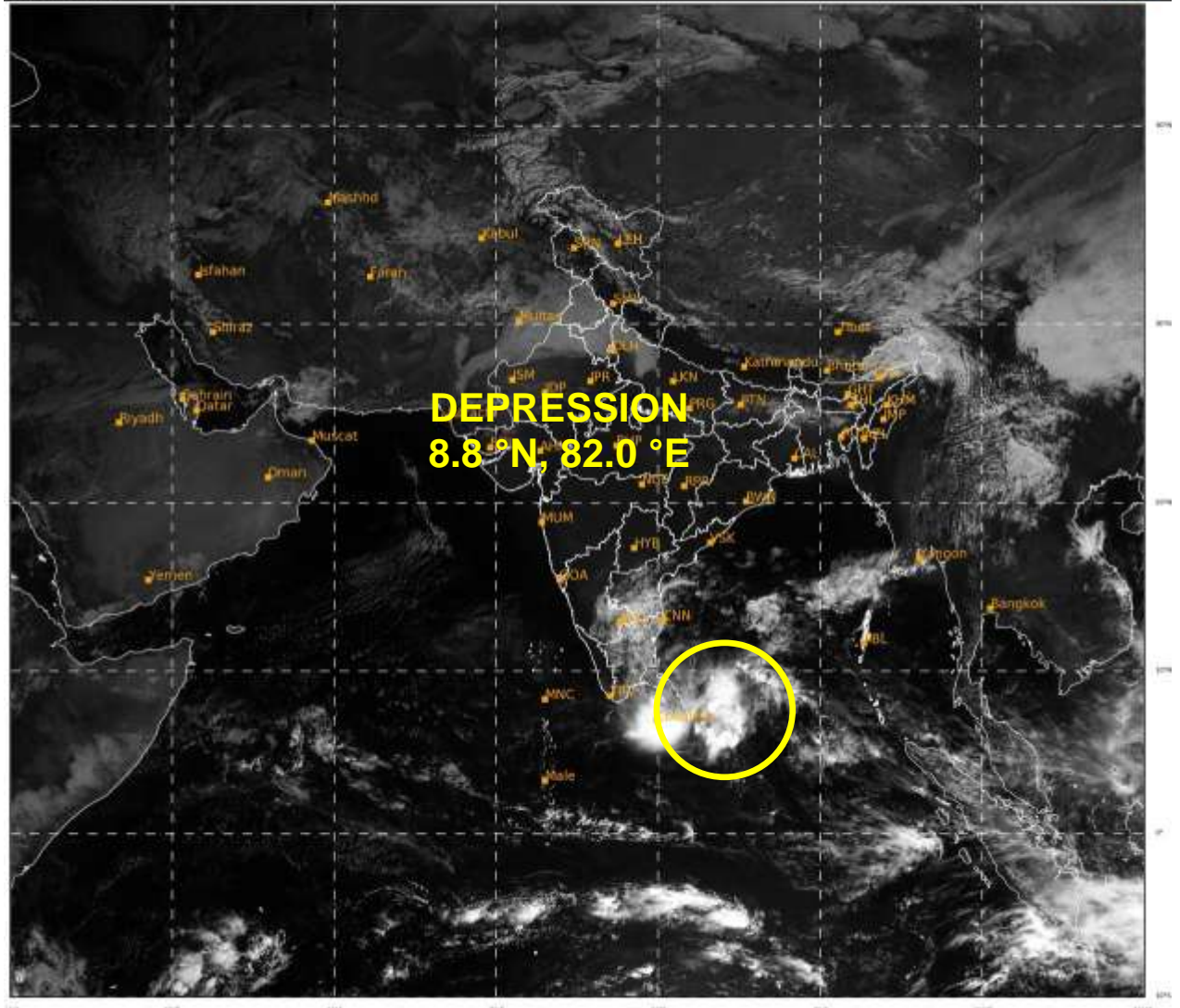
Scientist C, Cyclone Warning Division, New Delhi

Copy to: ACWC Mumbai & Chennai/ CWC Ahmedabad/ CWC Thiruvananthapuram/ MC Goa

LEGEND: Heavy Rainfall: 64.5 to 115.5mm, **Very Heavy Rainfall:** 115.6 to 204.4mm **Most Places:** more than 76% of total stations, **Isolated Places:** Less than 25% of total

SAT : INSAT-3DR IMG
Visible Count 0.65 um
LIC Mercator

25-12-2022/(0515 to 0542) GMT
25-12-2022/(1045 to 1112) IST



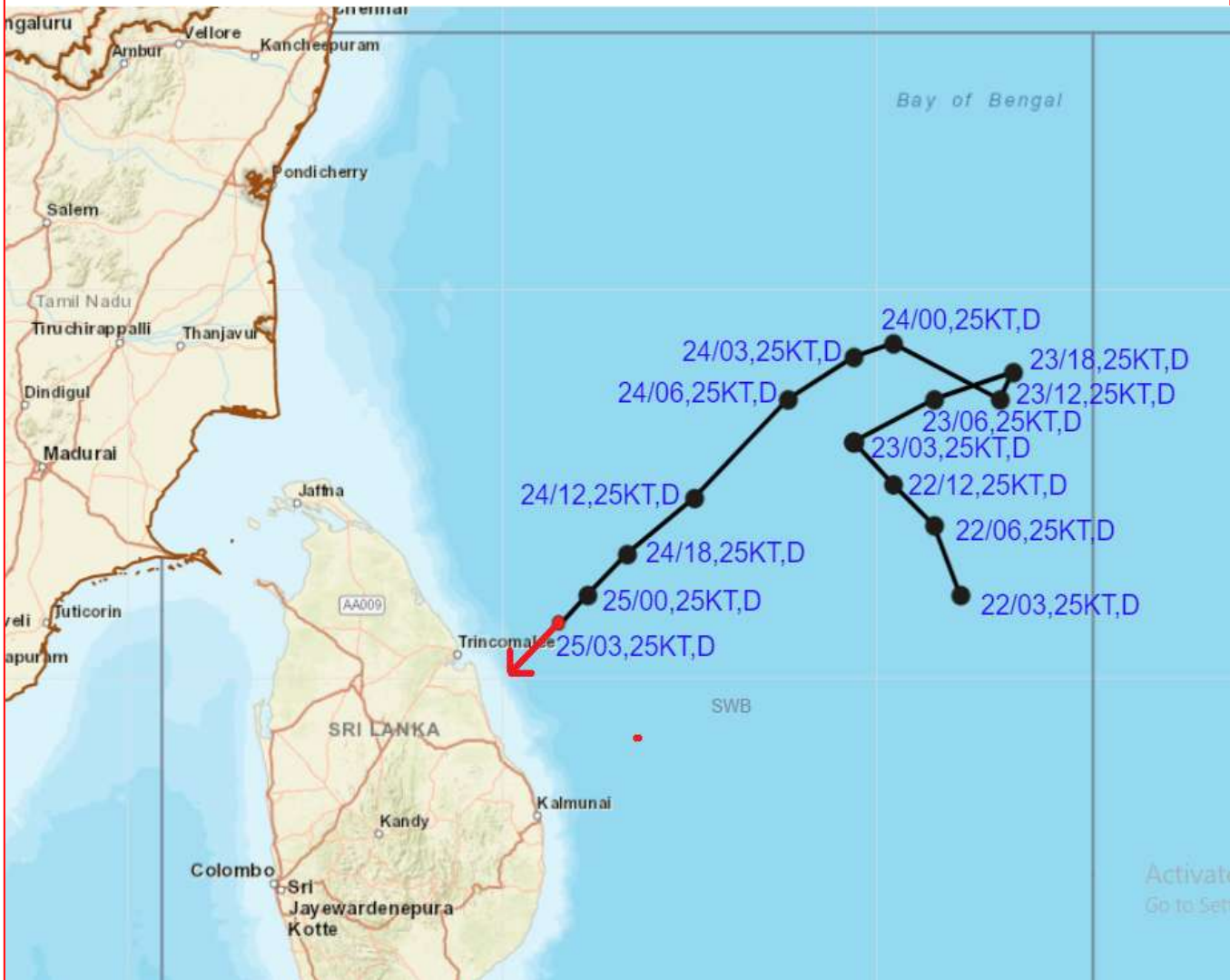
39

662

IMD, DELHI



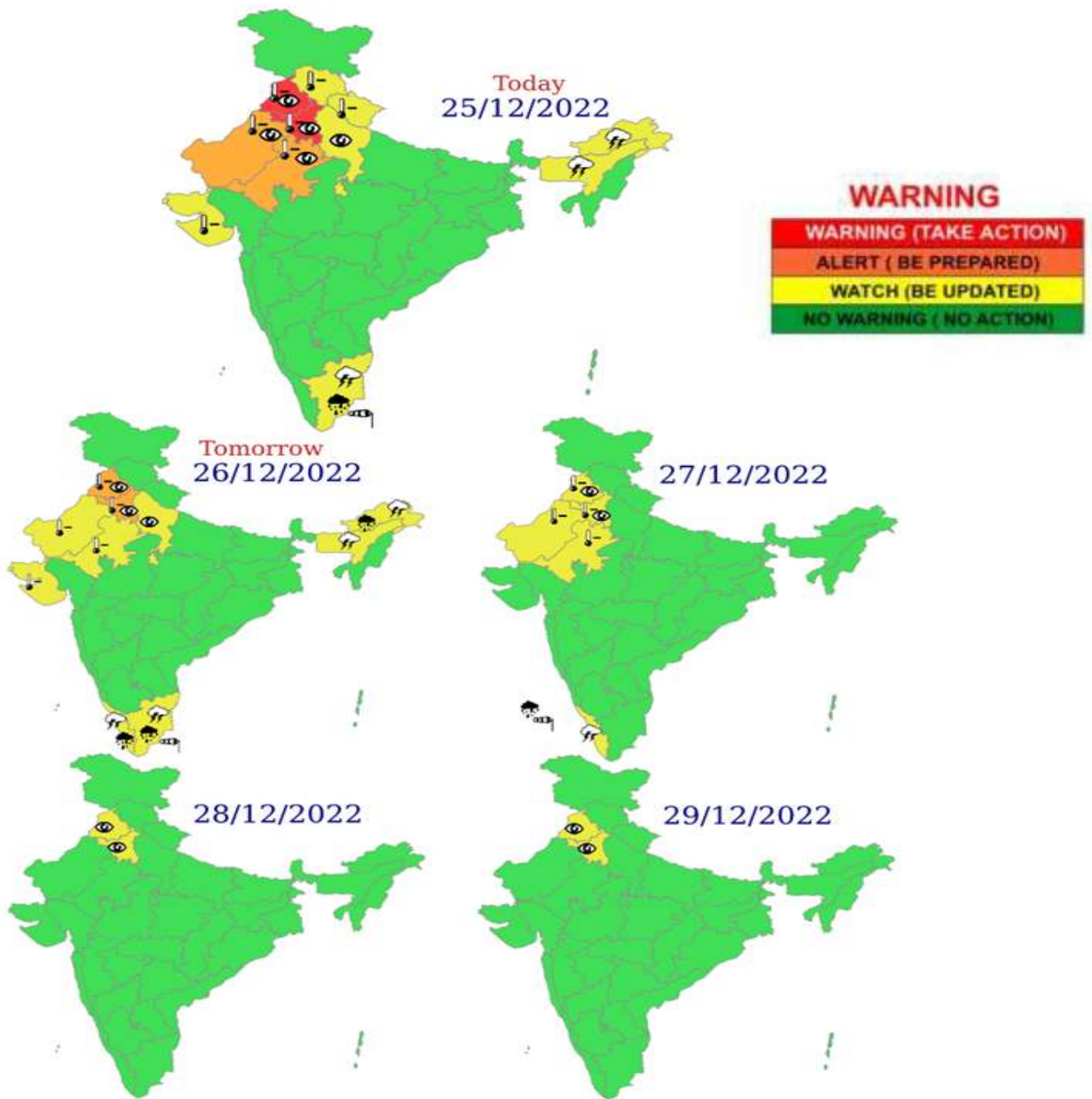
OBSERVED AND FORECAST TRACK OF DEPRESSION OVER SOUTHWEST BAY OF BENGAL AND ADJOINING SRI LANKA COAST BASED ON 0300 UTC OF 25th DECEMBER, 2022



DATE/TIME IN UTC
 IST=UTC + 0530
 L: LOW PRESSURE AREA
 WML: WELL MARKED LOW PRESSURE AREA
 D: DEPRESSION (17-27 KT)
 DD: DEEP DEPRESSION (28-33 KT)
 CS: CYCLONIC STORM (34-47 KT)
 SCS: SEVERE CYCLONIC STORM (48-63KT)
 VSCS: VERY SEVERE CYCLONIC STORM (64-89 KT)
 ESCS: EXTREMELY SEVERE CYCLONIC STORM (90-119 KT)
 SuCS: SUPER CYCLONIC STORM (≥ 20 KT)

- LESS THAN 34 KT
- 34-47 KT
- ≥ 48 KT
- OBSERVED TRACK
- FORECAST TRACK
- CONE OF UNCERTAINTY

WEATHER WARNING GRAPHICS



- | | | | |
|--|--|--|--|
|  Heavy Rain |  Heavy Snow |  Thunderstorm |  Dust Storm |
|  Strong Winds |  Visibility |  Cyclone |  Squall/ Hail |
|  Frost |  Cold Wave |  Heat Wave |  Sea State |

